

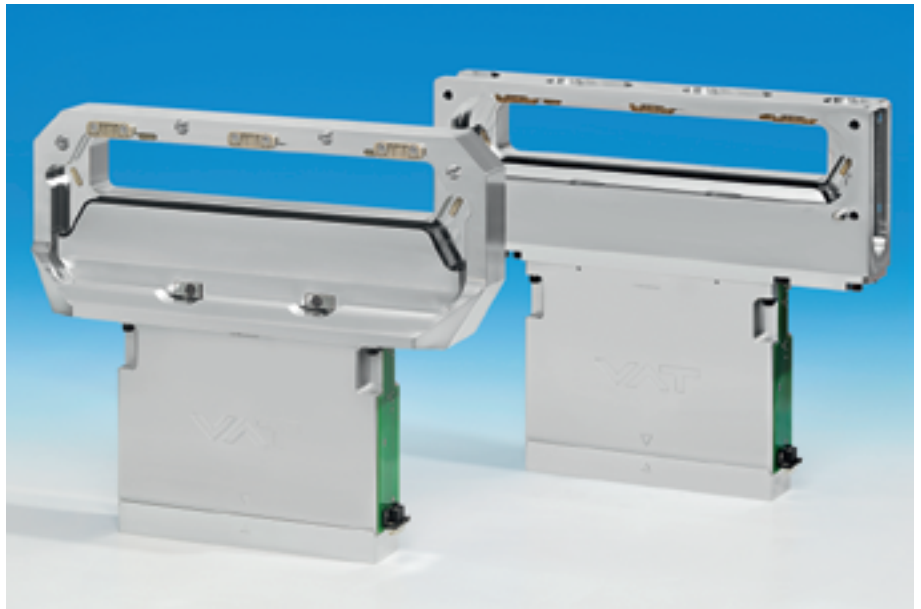
For SEMI applications handling
200, 300 and 450 mm wafers

For load lock / process module isolation

Virtually particle and vibration-free

>5 million cycles between maintenance

Very easy maintenance
thanks to self-adjusting plate



Body material

aluminum or stainless steel

Valve Series 022

double acting
pneumatic actuator
with position indicator

SEMI E21-94

SEMI E21-94

SEMI E21.1-1296

DN (D1 x D)		Ordering numbers			
mm	inch	type B opening: rear side > seat side with bonnet flange		type A opening: rear side = seat side with bonnet flange	
		aluminum	stainless steel	aluminum	stainless steel
32 x 222	1.26 x 8.74	02209-BA24	02209-BE24	02209-AA24	02209-AE24
46 x 236	1.81 x 9.29	02210-BA24	02210-BE24	02210-AA24	02210-AE24
50 x 336	1.97 x 13.23	02212-BA24	02212-BE24	02212-AA24	02212-AE24
56 x 496	2.20 x 19.53	02213-BA24	02213-BE24	02213-AA24	02213-AE24

with solenoid for impulse actuation: 022 **44** (specify control voltage)

Other opening sizes: see «Options»

Insert Series 032

double acting
pneumatic actuator
with position indicator

SEMI E21-94

SEMI E21-94

SEMI E21.1-1296

DN (D1 x D)		Ordering numbers	
mm	inch	type C	
		aluminum	stainless steel
32 x 222	1.26 x 8.74	03209-CA24	03209-CE24
46 x 236	1.81 x 9.29	03210-CA24	03210-CE24
50 x 336	1.97 x 13.23	03212-CA24	03212-CE24
56 x 496	2.20 x 19.53	03213-CA24	03213-CE24

with solenoid for impulse actuation: 032 **44** (specify control voltage)

Other opening sizes and insert types: see «Options»

